

Media and teaching aids

CLA[®]

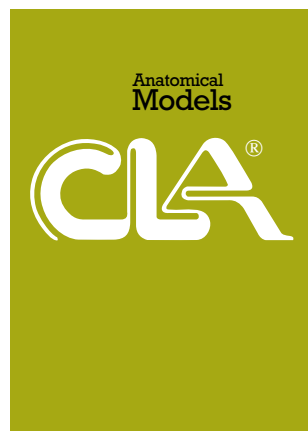


Systèmes Didactiques s.a.r.l.
Equipement pour l'enseignement expérimental, scientifique et technique
www.systemes-didactiques.fr

CLA offers high standard teaching material in three areas for health education!



With their range of selected training charts, particularly in the most practical sizes for class lessons (84 x 195 cm and 84 x 119 cm), and the series of overhead foils and slides CLA offers valuable basic material for teaching theory. Both the wall charts and the Working Transparencies D1 have been developed by the "Federal German Central Office for Health Education, Cologne".

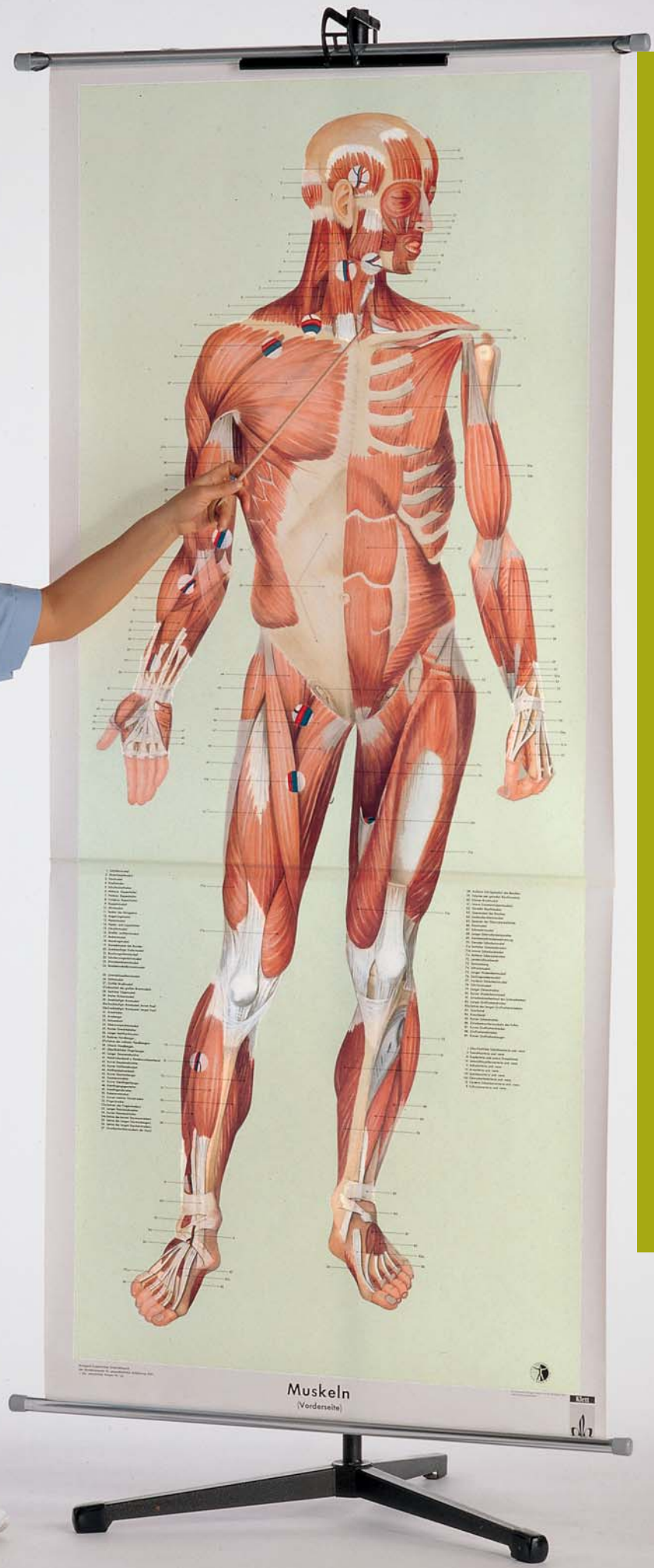


CLA offers the complete **range of SOMSO anatomical models**. These models have been developed according to strict scientific criteria in co-operation with leading scientists. Specialists fully appreciate these robust models, their accuracy and their aesthetic qualities. Without exception these models are individually handmade by craftsmen in Sonneberg and Coburg.



The range of **nursing dolls and medical phantoms** have all been developed by CLA. The high technical standard attained by these models, is a result of decades of experience and intensive dialogue with doctors and teachers, and is recognised throughout the world. Both the nursing dolls and medical phantoms meet a wide range of teaching needs. Without exception these products are individually handmade by craftsmen in Coburg.





CLA[®] Media and teaching aids

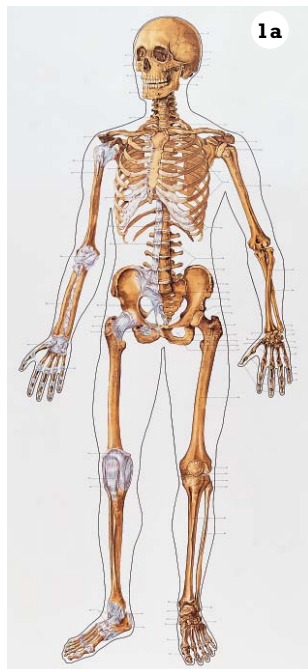
Teaching Charts
 These charts are useful
 in general teaching in
 front of a class and allow
 prolonged viewing when
 necessary.



**Compiled and published
 by the Federal German
 Central Office for Health
 Education, Cologne**

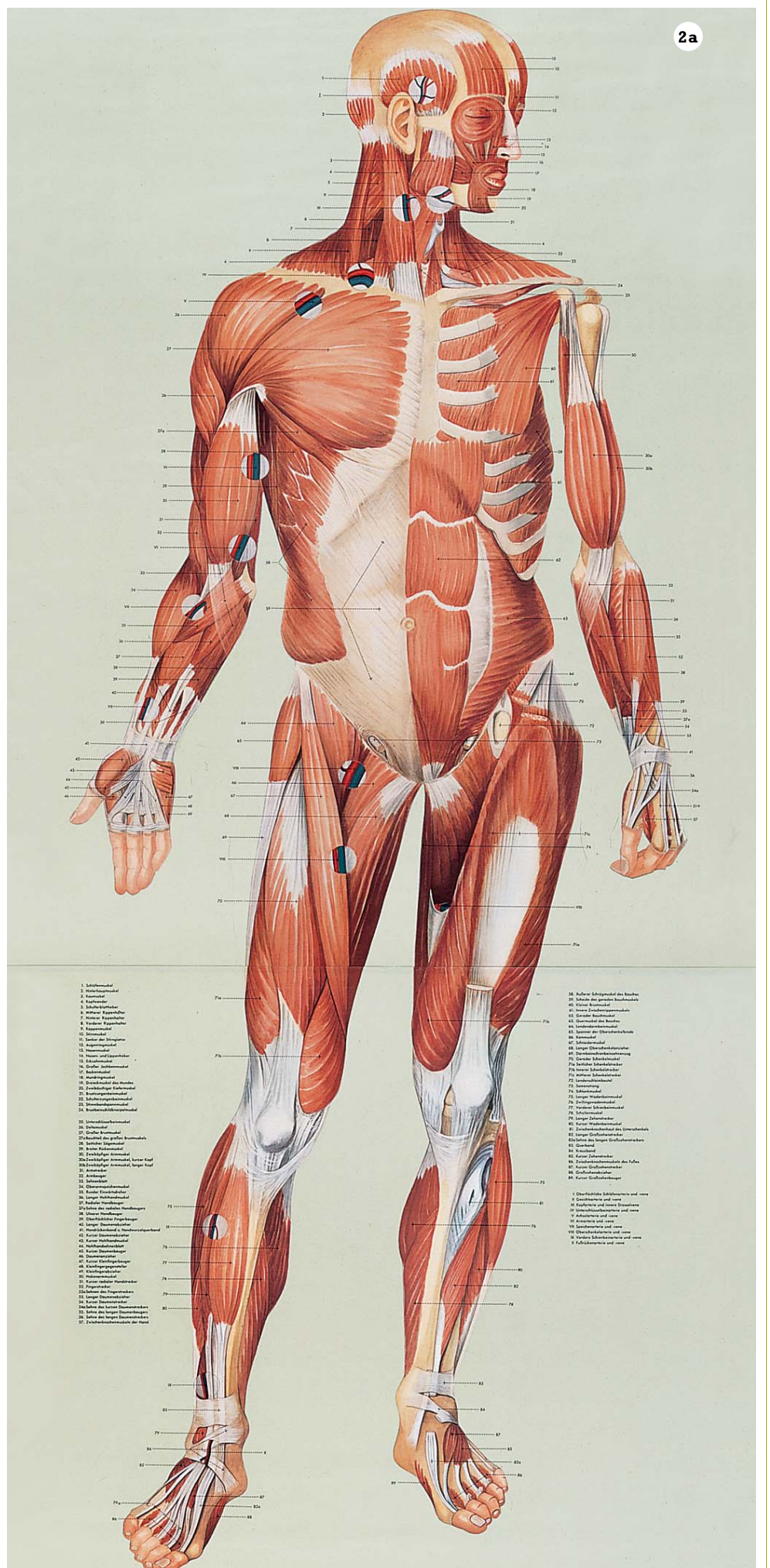
A detailed explanatory text
 accompanies every teaching
 chart. This text first of all
 gives the anatomical and phy-
 siological data. It is accom-
 panied by several pamphlets
 containing instructions and
 suggestions for experiments
 in order to make it easier for
 the teacher to select and
 present the material.

The charts marked with *
 are no longer mounted on
 linen but supplied on printed
 »Pretext« foil. This unique
 material is more durable,
 ensures brilliant colour
 reproduction and can also
 be written on with a water
 based marker. The other
 charts will also be produced
 on »Pretext« when re-printed.



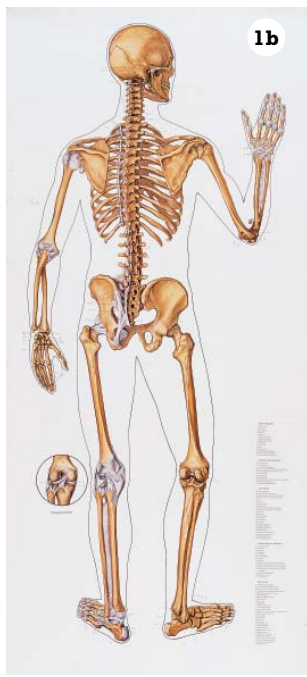
1 a
**Skeleton with
 Ligamentous Apparatus**
 - Front View (84 x 195 cm)

2 a
Muscles - Front View *
 in two layers with recesses
 (84 x 195 cm)



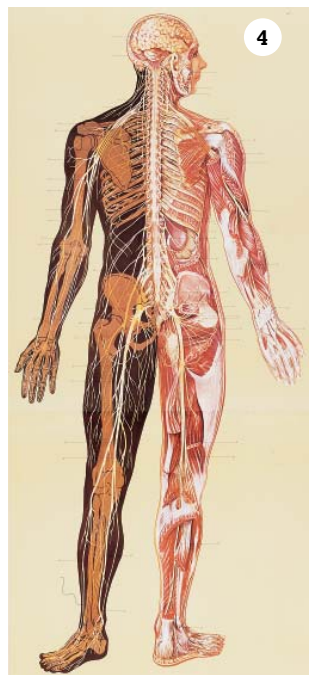
1. Schilddrüse
2. Kehlkopf
3. Kehlkopf
4. Kehlkopf
5. Kehlkopf
6. Kehlkopf
7. Kehlkopf
8. Kehlkopf
9. Kehlkopf
10. Kehlkopf
11. Kehlkopf
12. Kehlkopf
13. Kehlkopf
14. Kehlkopf
15. Kehlkopf
16. Kehlkopf
17. Kehlkopf
18. Kehlkopf
19. Kehlkopf
20. Kehlkopf
21. Kehlkopf
22. Kehlkopf
23. Kehlkopf
24. Kehlkopf
25. Kehlkopf
26. Kehlkopf
27. Kehlkopf
28. Kehlkopf
29. Kehlkopf
30. Kehlkopf
31. Kehlkopf
32. Kehlkopf
33. Kehlkopf
34. Kehlkopf
35. Kehlkopf
36. Kehlkopf
37. Kehlkopf
38. Kehlkopf
39. Kehlkopf
40. Kehlkopf
41. Kehlkopf
42. Kehlkopf
43. Kehlkopf
44. Kehlkopf
45. Kehlkopf
46. Kehlkopf
47. Kehlkopf
48. Kehlkopf
49. Kehlkopf
50. Kehlkopf
51. Kehlkopf
52. Kehlkopf
53. Kehlkopf
54. Kehlkopf
55. Kehlkopf
56. Kehlkopf
57. Kehlkopf
58. Kehlkopf
59. Kehlkopf
60. Kehlkopf
61. Kehlkopf
62. Kehlkopf
63. Kehlkopf
64. Kehlkopf
65. Kehlkopf
66. Kehlkopf
67. Kehlkopf
68. Kehlkopf
69. Kehlkopf
70. Kehlkopf
71. Kehlkopf
72. Kehlkopf
73. Kehlkopf
74. Kehlkopf
75. Kehlkopf
76. Kehlkopf
77. Kehlkopf
78. Kehlkopf
79. Kehlkopf
80. Kehlkopf
81. Kehlkopf
82. Kehlkopf
83. Kehlkopf
84. Kehlkopf
85. Kehlkopf
86. Kehlkopf
87. Kehlkopf
88. Kehlkopf
89. Kehlkopf

2a



1b

1 b
Skeleton with Ligamentous Apparatus
 - Dorsal View (84 x 195 cm)



4

2 b
Muscles - Rear View *
 in two layers
 (84 x 195 cm)



5

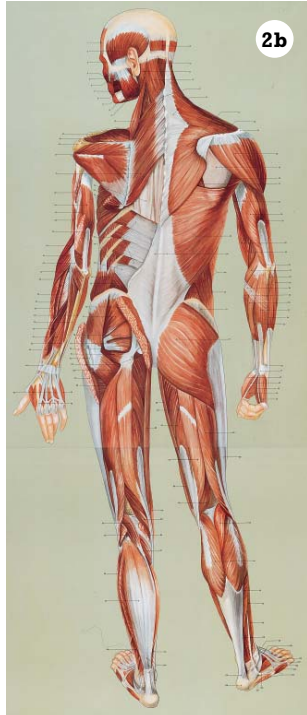
3
Circulation *
 (84 x 195 cm)

4
Nervous System *
 (84 x 195 cm)

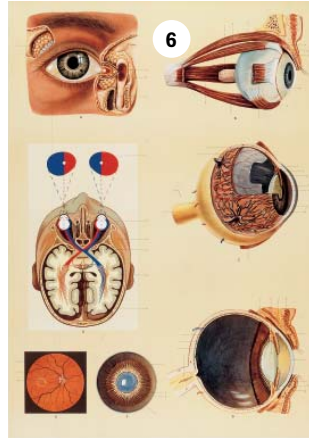
5
Internal Organs, Torso
 (84 x 119 cm)

6
The Eye and Vision *
 (84 x 119 cm)

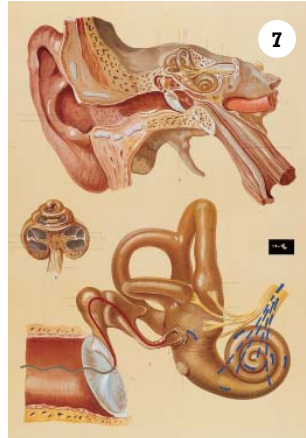
7
The Ear and Hearing *
 (84 x 119 cm)



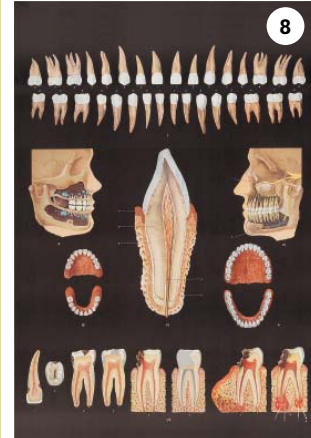
2b



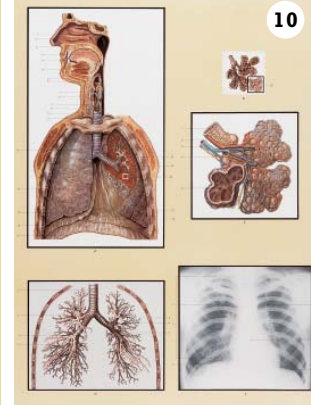
6



7



8

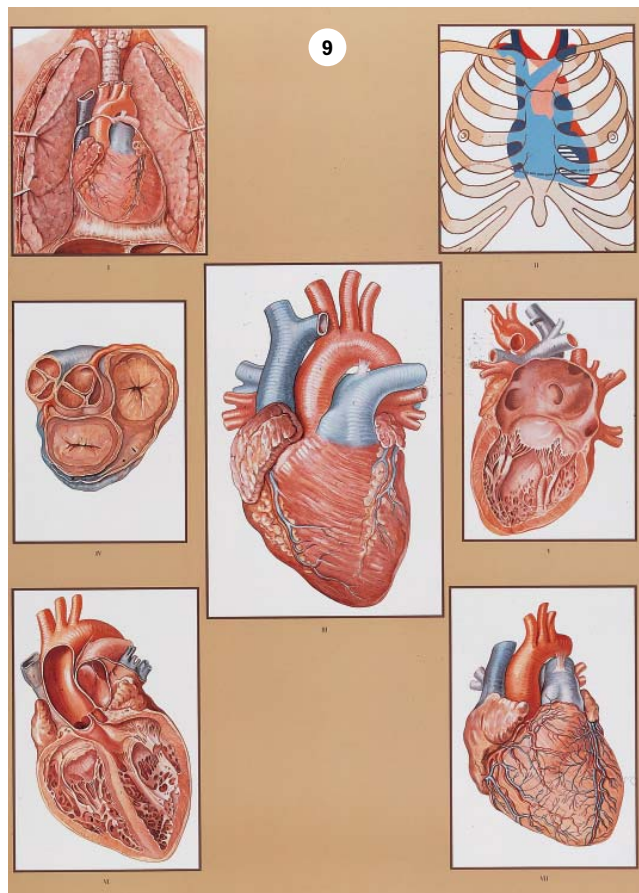


10

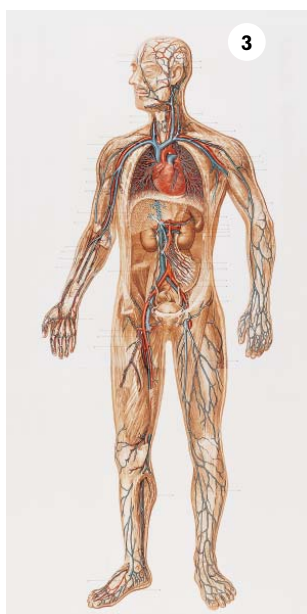
8
Healthy and Decaying Teeth *
 (84 x 119 cm)

9
The Heart *
 (84 x 119 cm)

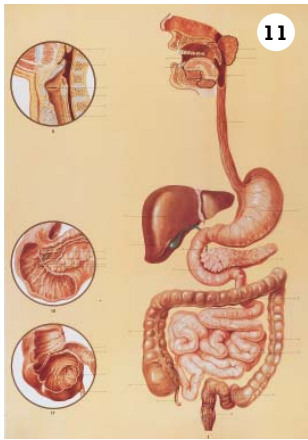
10
Respiratory Organs *
 (84 x 119 cm)



9



3



11
Digestive Organs *
(84 x 119 cm)

12
Lymphatic Vessels
(84 x 119 cm)

13
Head and Throat
(119 x 84 cm)

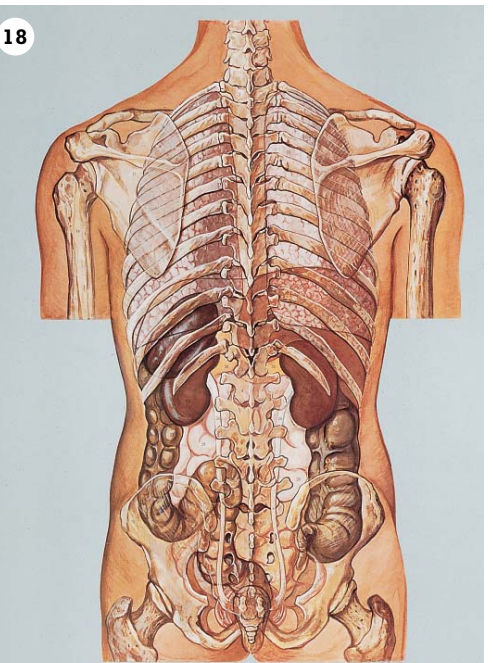
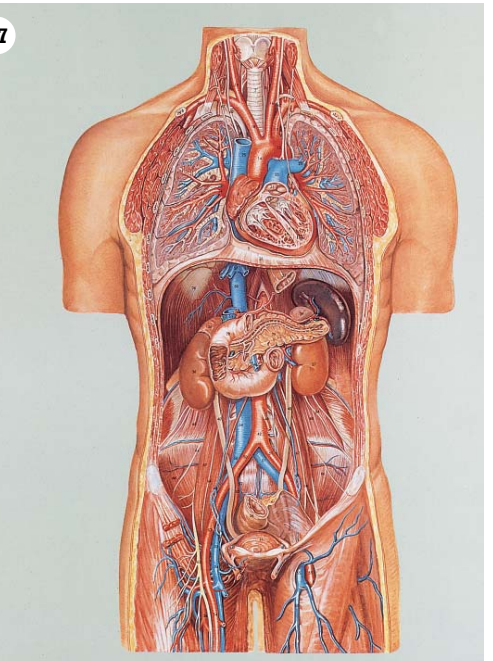
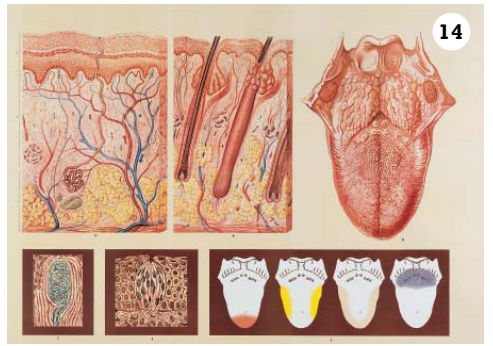
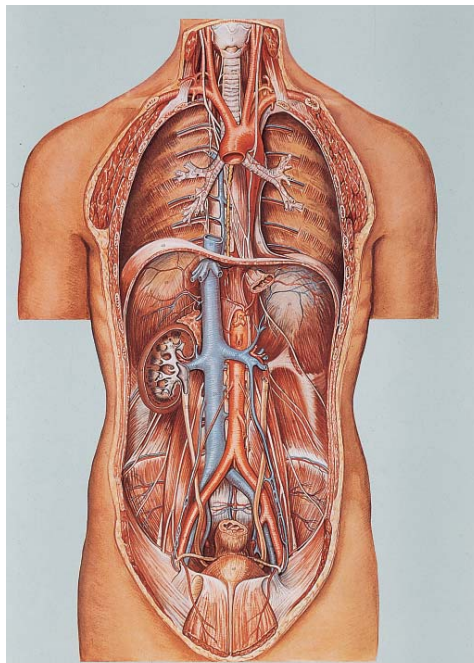
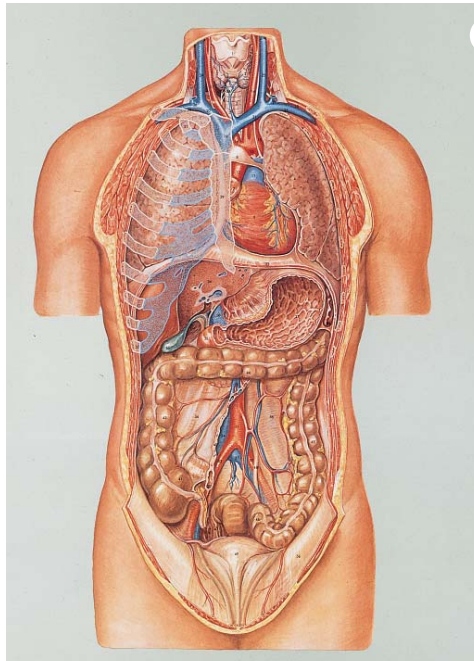
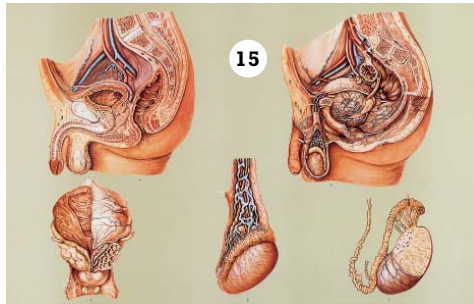
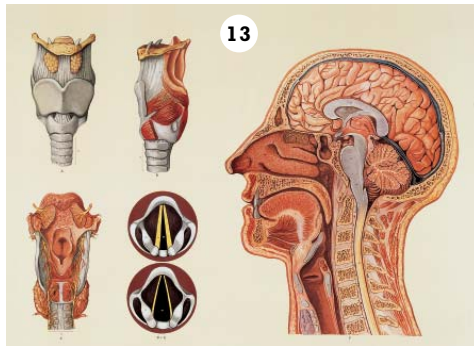
14
Skin and Tongue
(119 x 84 cm)

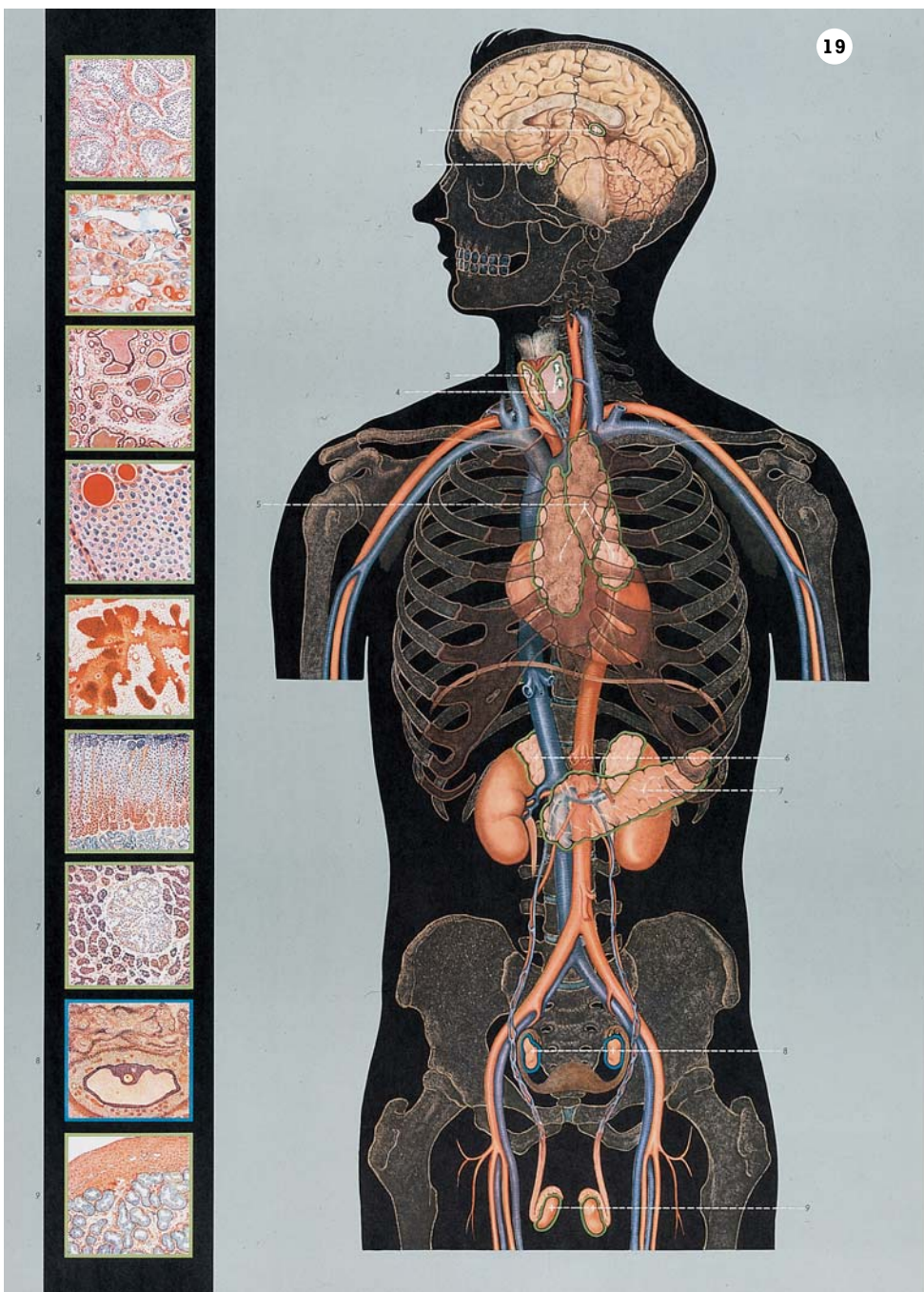
15
Male Pelvic Organs
(119 x 84 cm)

16
Female Pelvic Organs *
(119 x 84 cm)

17
**Chest and Abdominal
Organs of Human**
(119 x 84 cm)

18
**Human Chest
and Abdominal
Cavity and Skeleton**
with position of internal
organs - rear view
(119 x 84 cm)





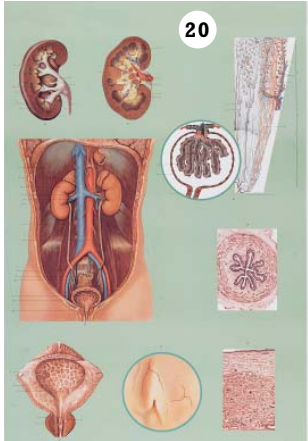
19

19
Endocrine Glands
(84 x 119 cm)

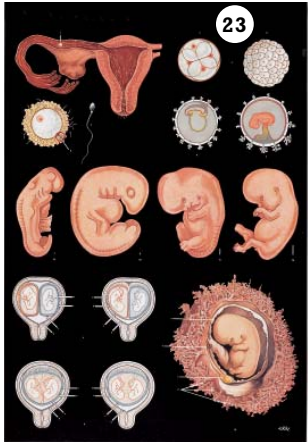
20
Kidneys and Urinary System *
(84 x 119 cm)

22
Cells and Tissues
(119 x 84 cm)

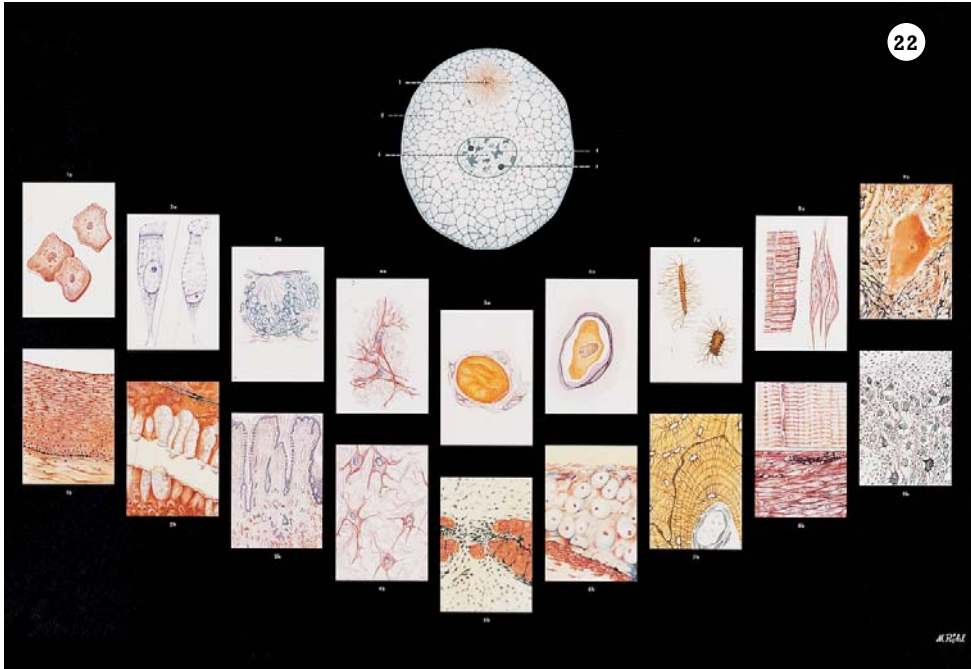
23
Development of the Embryo
(84 x 119 cm)



20



23



22

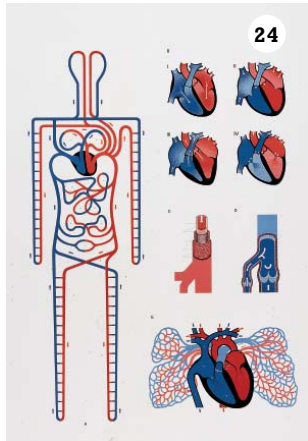
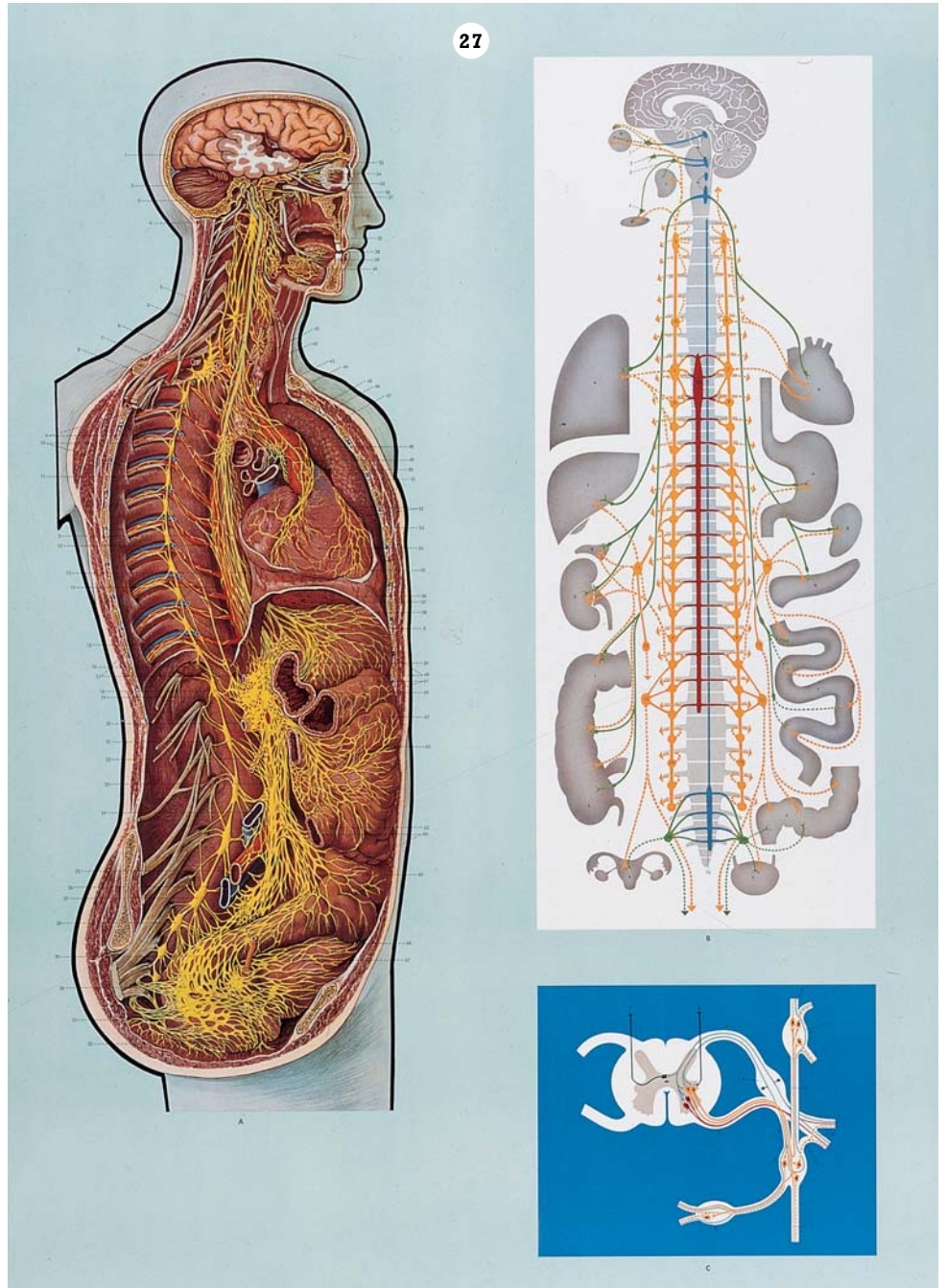
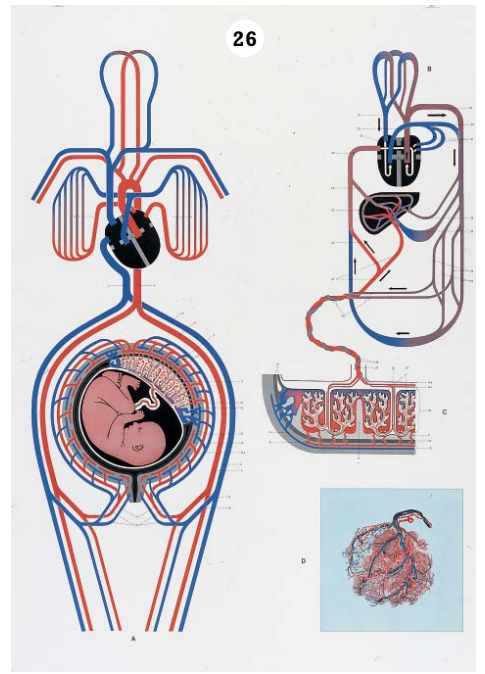
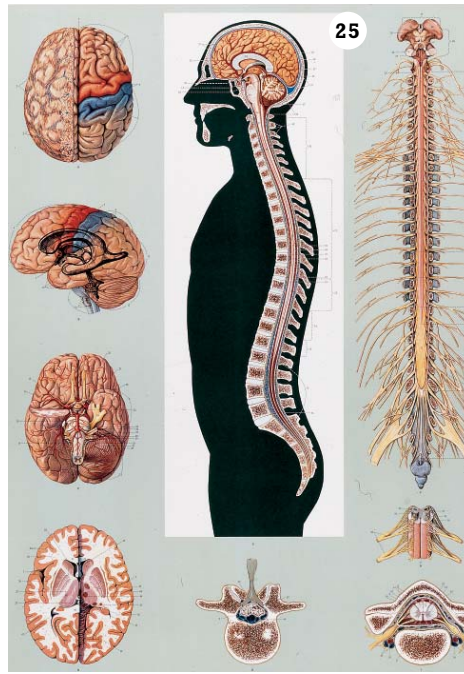
24
Schematic Diagram
of the Blood Circulation
System *
 (84 x 119 cm)

25
Brain and Spinal Cord *
 (84 x 119 cm)

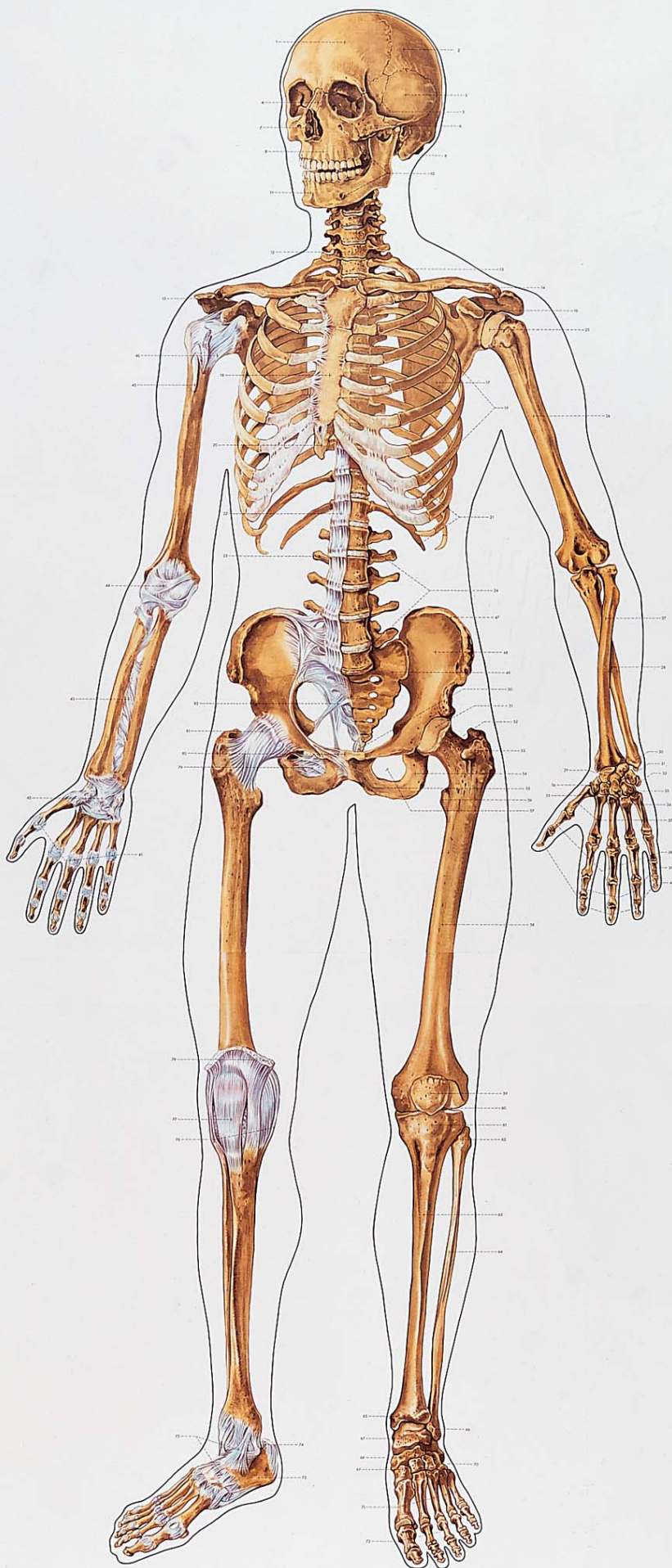
26
Schematic Diagram of
Mother and Child's Blood
Circulation System *
 (84 x 119 cm)

27
Autonomic Nervous
System
 (84 x 119 cm)

Experience has shown that discussion of the autonomic nervous system is among the most difficult chapters in the teaching of anthropology. Chart No. 27 is intended to facilitate the treatment of this subject. First of all, it illustrates the extremely fine innervation of the intestines and shows nerve tissues. A panel illustrates schematically how and from where the individual organs are innervated. In this chart, the sympathetic and parasympathetic systems stand out in colour. A schematic diagram showing the link between the autonomic and central nervous systems is provided in another panel.



1a



28



Birkner-Röntgentafel des Skeletts



28
X-Ray Chart of the Skeleton

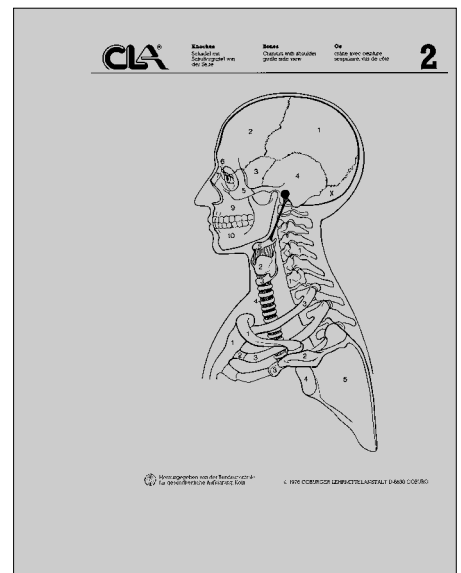
Grashey / Birkner:
 (90 x 125 cm)
 Schematic combination
 diagram in 3/5 of its natural
 size. Diagnostic sources of
 error, diversities, anomalies
 and critical pathological
 cases. Founded by Prof. Dr.
 Rudolf Grashey (deceased).
 By Prof. Dr. Rudolf Birkner,
 Berlin 1966, 5th extended
 and revised edition, wall
 chart on cloth with rods
 inserted.

Scientific Editor:
Dr. med. Olaf v. Bornhaupt

Compiled and published
by the Federal German
Central Office for Health
Education, Cologne



File



Transparency

Teacher's accompanying text with illustration as folding sheet

schwarz-weiß	Farbe	Organ-Nr.
farbig		
Hirnschädel		
Schädelknochen	blau	1
Stirnbein	gelb	2
Kieferknochen	grün	3
Schädelbasis	rot	4
Hinterhauptbein	gelb	x
Gesichtschädel		
Jochbein	braun	6
Tränenbein	grün	9
Nasenbein	rot	7
Pflugscharbein	—	—
Oberkiefer mit Zähnen	blau	8
Unterkiefer mit Zähnen	gelb	10
 Hals		
Halswirbelkörper mit Quer- und Querfortsätzen	grün	1
Schilddrüsenknorpel	rot	2
Fingerringel	gelb	3
Luftröhre	braun	4
Zungenbein	blau	5
 Brustkorb		
Brustbein	blau	1
Knochen der Rippen	rot	2
Rippen	gelb	3
 Schultergürtel		
Schulterbein	grün	1
Schulterblatt, ohne mit Schulterblattnähe	blau	2
Flügelbein	rot	3
Schulterfortsatz	orange	4
Schulterblatt	braun	5

Model for the drawing set

D 1

Working Transparencies

"Structure and Function of the Human Body" D 1

The transparency is becoming more and more important as a teaching tool in our schools today. It is simple to use in conjunction with an overhead projector and offers even those pupils sitting farthest away a good quality picture.

With the publication of the D 1 "Construction and function of the human body" transparency folder by the "Federal German Central Office for Health Education", CLA makes a further contribution to teaching material for human biology lessons in intermediate, secondary modern, vocational and grammar schools and training institutes for auxiliary medical personnel.

The folder comprises 46 work units which are arranged in a file in such a manner that they can quickly be taken out. Each work unit includes a black and white work transparency, the teacher's accompanying text with illustration as folded sheet and the model for the drawing sheets. The "Federal German Central Office for Health Education" has no objection to schools duplicating these drawing sheets for direct use during lessons.

Each transparency is immediately ready for use in a transparent sleeve. The teacher can write or draw with water soluble markers on the transparency as well as on the protective sleeve.

The use of transparencies together with the drawing sheets makes it possible to coordinate instruction at the front of the class with the independent work of the pupils. The blank drawing

sheets are also suitable for controlling achievements.

Contents of 46 Working Units Consisting of:
Foil
a Lecturer's Sheet taking the Form of Folding Sheet with Text
b Drawing Sheet

Working Unit:

Bones:

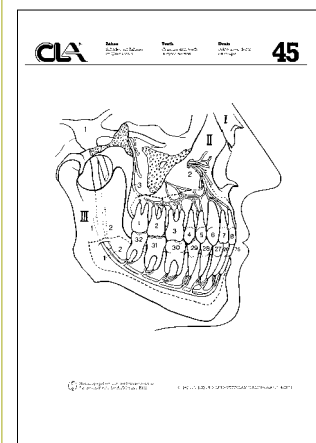
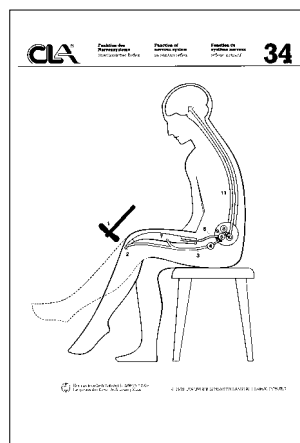
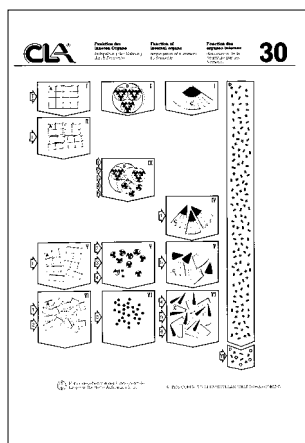
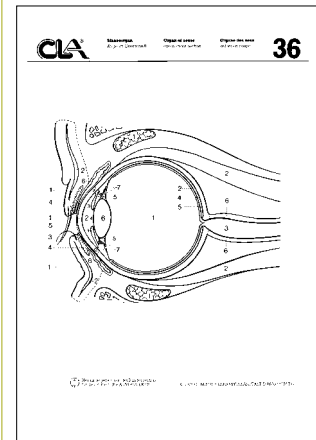
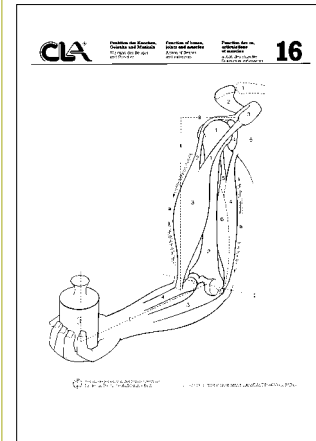
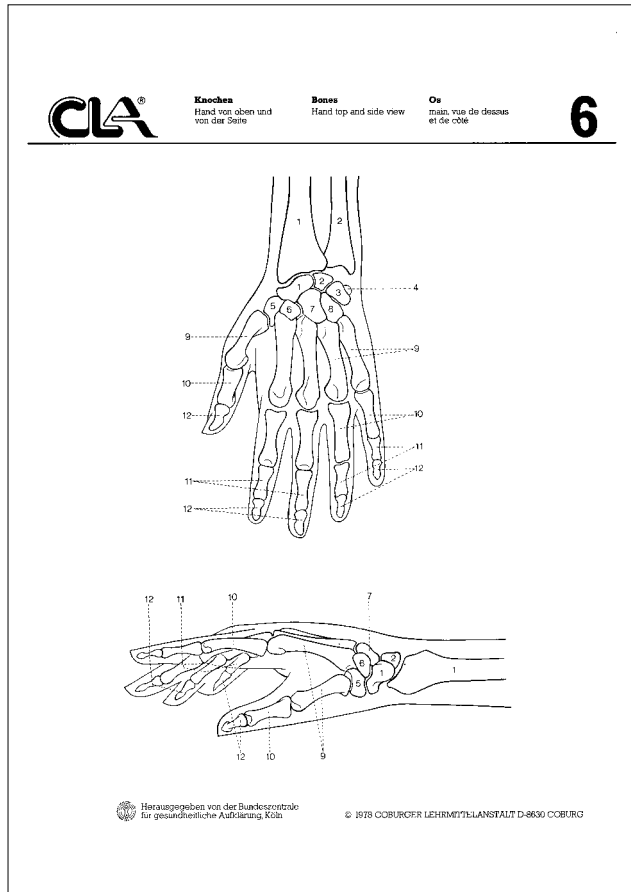
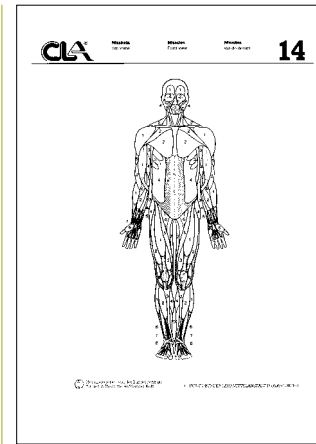
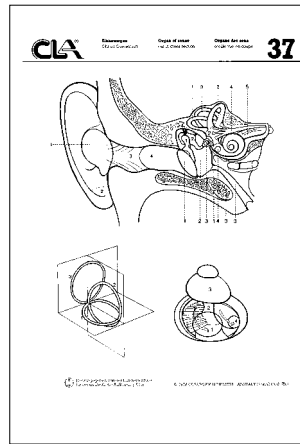
1. Cranium with shoulder girdle front view
2. Cranium with shoulder girdle side view
3. Thorax and pelvis front view
4. Thorax and pelvis rear view
5. Arm with shoulder girdle front and rear view
6. Hand top and side view
7. Leg front and rear view

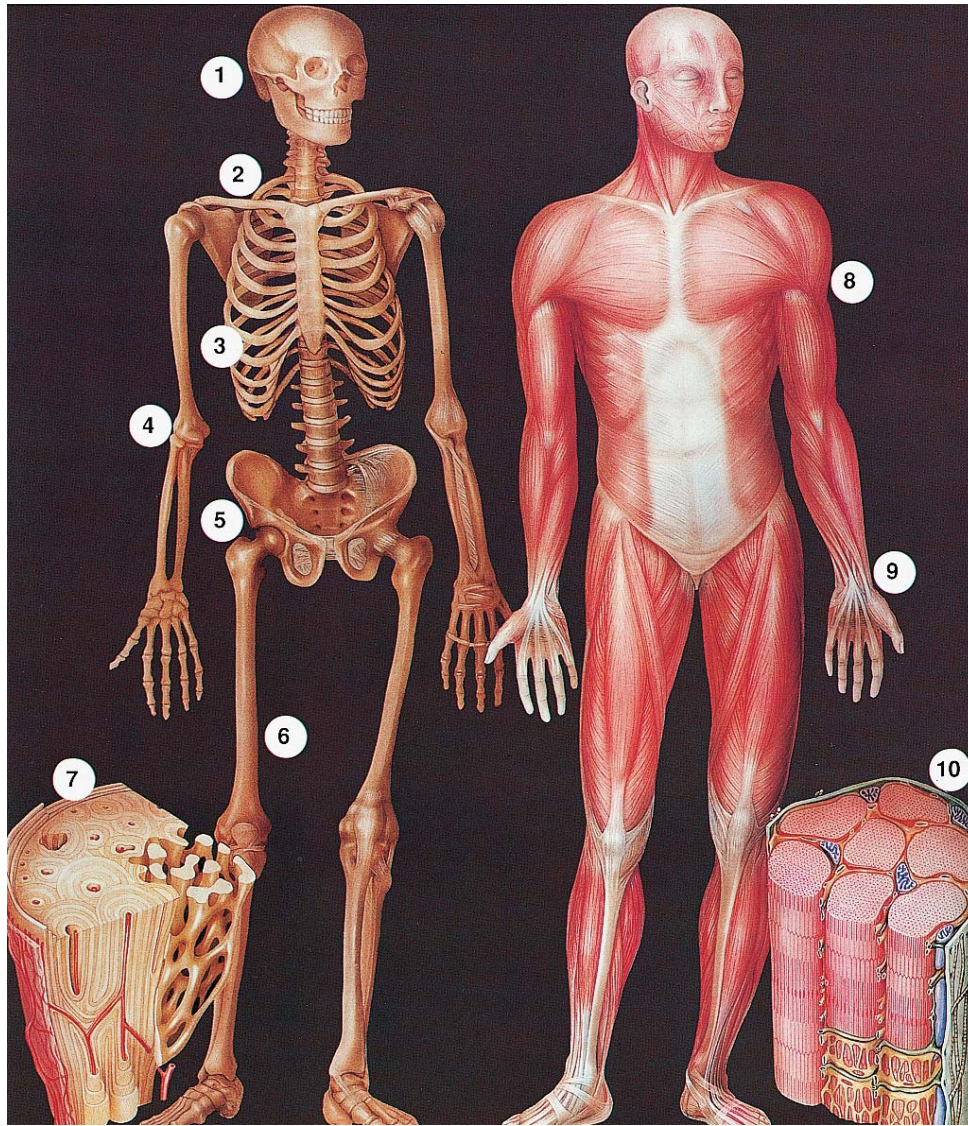
8. Foot top and side view
9. Skeleton front view
10. Skeleton side view
11. Skeleton rear view

Muscles:

12. Arm
 13. Leg
 14. Front view
 15. Rear view
- Function of bones, joints and muscles:**
16. Action of flexors and extensors
 17. Diaphragm and thorax position during inhalation and exhalation, side and front view
 18. Foot inside view, with arch and footprint for normal foot, flat foot and hollow foot
 19. Normal foot inside, outside and underneath view with load and relief triangles
- Internal organs:**
20. Position of internal organs front view
 21. Position of internal organs rear view

- 22. Heart with vessel dispositions for lung and body circulation (semi-diagrammatic)
- 23. Heart with vessel dispositions for lung and body circulation (diagrammatic)
- 24. Trachea and lungs with diagrammatic view of heart
- 25. Digestive tract
- 26. Villi, cross sectional and plan views
- 27. Kidney, ureter, bladder with afferent and efferent vessels
- 28. Bowman's capsule with uriniferous tubule leading from it
- Function of internal organs:**
- 29. Effect of ferments on nutriment
- 30. Segregation of nutriment by ferments
- Function of circulation:**
- 31. Diagram of blood circulation and respiration
- Nervous system:**
- 32. Motoric nervous system
- 33. Vegetative nervous system
- Function of nervous system:**
- 34. Involuntary reflex
- 35. Voluntary reflex
- Organ of Sense:**
- 36. Eye in cross section
- 37. Ear in cross section
- 38. Tongue
- 39. Skin
- Sexual organs:**
- 40. Female pelvic organs side view
- 41. Male pelvic organs side view
- Function of sexual organs:**
- 42. 1st month of pregnancy
- 43. 9th month of pregnancy
- Skin:**
- 44. Diagrammatic cross section through the skin (organ of sense skin)
- Teeth:**
- 45. Cranium with teeth in cross section
- 46. Molar and incisor in cross section





D10 Transparency 3

D 10

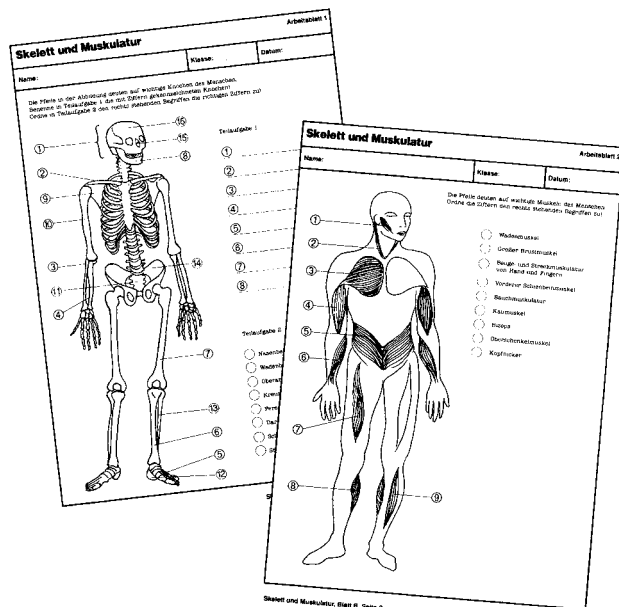
**Transparency Atlas
"Anatomy and Health
Education"
Scharf/Jungbauer**

**80 colour transparencies
for daylight projection
with information for the
teacher and worksheets
for classroom instruction
in 2 volumes**

**The following materials
are available for use in
classroom instruction:**

- 80 colour transparencies for daylight projection (21 cm x 30 cm) with detailed illustrations of organs.
- Also included are worksheets which can be copied for the students and
- information for the teacher with answers to the worksheets, as well as explanations of the individual topics and suggestions for lesson plans.

The Transparency Atlas "Menschenkunde und Gesundheitserziehung" ("Anatomy and Health Education") according to Scharf/Jungbauer is available only in German.



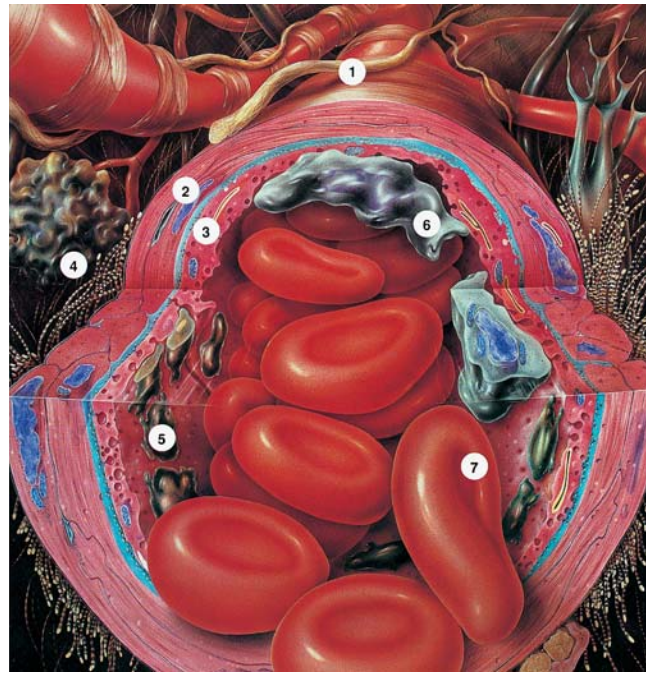
Inhaltsverzeichnis

Band 1

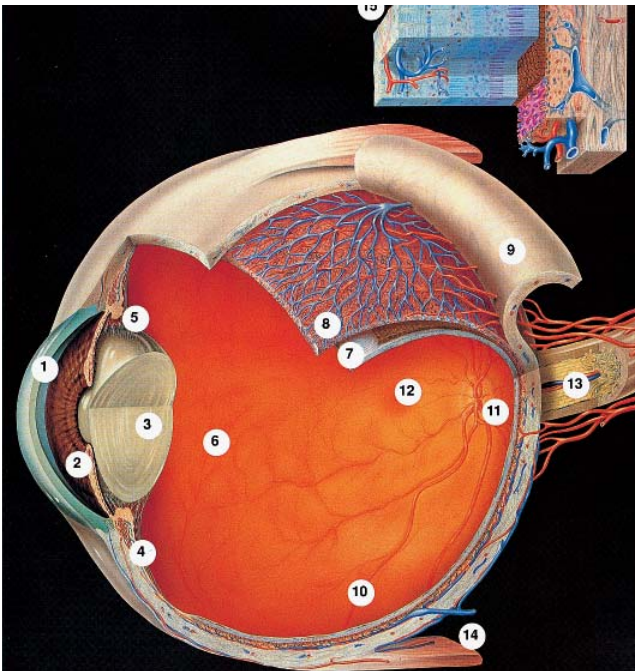
- Folie 01: Die Zelle/Bau
- Folie 02: Die Zelle/Organelle
- Folie 03: Skelett und Muskulatur
- Folie 04: Die Muskeln
- Folie 05: Knochen/Bau und Funktion
- Folie 06: Knochen/Wirbel und Bandscheiben
- Folie 07: Knochen/Kniegelenk
- Folie 08: Knochen/Hüftgelenk
- Folie 09: Knochen/Fuß
- Folie 10: Knochen/Hand
- Folie 11: Knochen/Schädel
- Folie 12: Knochen/Feinbau
- Folie 13: Knochenbrüche
- Folie 14: Kreislauf/Gefäßsysteme
- Folie 15: Kreislauf/Hoher Blutdruck
- Folie 16: Kreislauf/Niedriger Blutdruck
- Folie 17: Das Blut
- Folie 18: Das Herz/Bau
- Folie 19: Das Herz/Herzklappen
- Folie 20: Das Herz/Herzaktivität
- Folie 21: Das Herz/Erregungsleitung
- Folie 22: Das Herz/Herzinfarkt
- Folie 23: Das Herz/Herzschrittmacher
- Folie 24: Die Nase
- Folie 25: Das Auge
- Folie 26: Bindehautentzündung
- Folie 27: Kurz- und Weitsichtigkeit
- Folie 28: Das Ohr/Bau
- Folie 29: Das Ohr/Mittelohr
- Folie 30: Die Zunge
- Folie 31: Die Zähne/Bau
- Folie 32: Die Zähne/Karies
- Folie 33: Verdauung/Speicheldrüsen
- Folie 34: Verdauung/Magen
- Folie 35: Verdauung/Magengeschwür
- Folie 36: Verdauung/Leber
- Folie 37: Verdauung/Leberentzündung
- Folie 38: Verdauung/Gallensteine
- Folie 39: Verdauung/Dünndarm
- Folie 40: Verdauung/Bauchspeicheldrüse
- Folie 41: Verdauung/Dickdarm
- Folie 42: Verdauungsstörungen
- Folie 43: Verdauung/Stoffwechsel



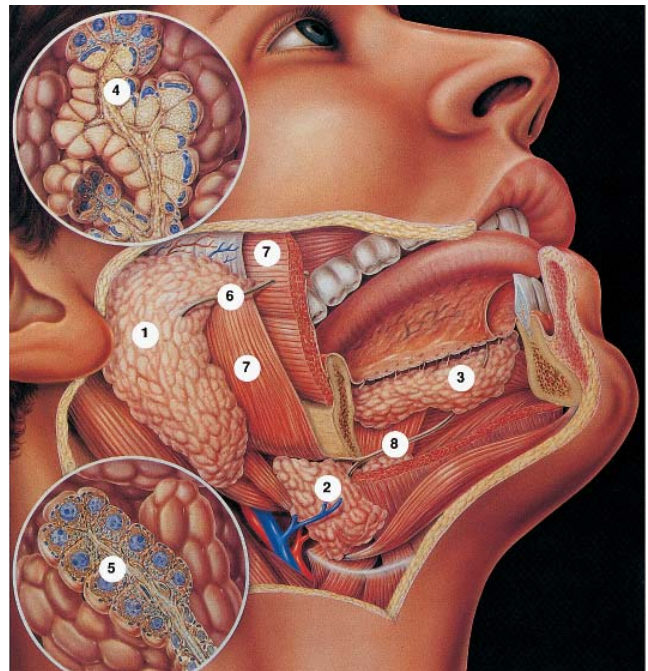
D10 Transparency 2



D10 Transparency 17



D10 Transparency 25



D10 Transparency 33

Band 2

- Folie 44: Der Kehlkopf
- Folie 45: Lunge/Bau
- Folie 46: Lunge/ Bronchialbaum
- Folie 47: Lunge/Bronchien
- Folie 48: Lunge/ Lungenentzündung
- Folie 49: Lunge/Embolie
- Folie 50: Die Haut
- Folie 51: Wundheilung
- Folie 52: Die Krätzmilbe
- Folie 53: Das Haar
- Folie 54: Sprödes Haar
- Folie 55: Fettiges Haar
- Folie 56: Gehirn/Bau
- Folie 57: Gehirn/Schlaganfall

- Folie 58: Gehirn/ Gehirnverletzungen
- Folie 59: Gehirn/ Hypothalamus
- Folie 60: Nervensystem/ Nervenzelle
- Folie 61: Nervensystem/ Rückenmark
- Folie 62: Vegetatives Nervensystem
- Folie 63: Die Niere/Bau
- Folie 64: Nierensteine
- Folie 65: Hormone/ Hypophyse
- Folie 66: Hormone/ Schilddrüse
- Folie 67: Hormone/ Nebenniere

- Folie 68: Die Milz
- Folie 69: Fortpflanzung/ Weibliche Geschlechtsorgane
- Folie 70: Fortpflanzung/ Männliche Geschlechtsorgane
- Folie 71: Fortpflanzung/ Embryonalentwicklung
- Folie 72: Stoffwechselstörungen/ Arteriosklerose
- Folie 73: Stoffwechselstörungen/ Gicht
- Folie 74: Vitaminmangel
- Folie 75: Infektionskrankheiten/ Grippe

- Folie 76: Infektionskrankheiten/ Mandelentzündung
- Folie 77: Fieber
- Folie 78: Infektabwehr
- Folie 79: Wundstarrkrampf
- Folie 80: Die Allergie



**Medical Slide Series
The Human Body**

All these slides are in colour and consist of micro-, macro- and clinical photographs. Every illustration is accompanied by an educational and scientifically correct text.

**Anatomy, 9 Series
33 Colour Slides with Text**

31001

- Skull**
1. Cranium, front and side view
2. Base of skull
3. Viscerocranium bones (separate)

31002

- Vertebral Column**
1. Atlas - rotary joint
2. Thoracic vertebra
3. Lumbar vertebra

31003

- Extremities**
1. Femur, longitudinal and cross-sections
2. Femur, epiphysis
3. Knee joint
4. Structure of knee (knee joint)
5. Skeleton of arm, ulna - radius
6. Skeleton of normal foot
7. Skeleton of flat foot
8. Hip-bone

31004

- Brain**
1. Brain and spinal column, front
2. Sagittal section with skull
3. Ventricle

31005

- Endocrine Glands**
1. Position of glands (schema)

31006

- Chest Cavity**
1. Position of thoracic organs
2. Heart conduction system
3. Lungs (embedded specimen)
4. Lungs (embedded specimen, section)
5. Lungs, vascular injection
6. Heart with injected vessels, ventral
7. Heart with injected vessels, dorsal

31007

- Abdominal Cavity**
1. Stomach vascular injection
2. Stomach, vascular injection (section)
3. Intestine vascular injection
4. Liver, vascular injection (micro)
5. Liver with impregnated bileduct (micro)
6. Liver (embedded specimen)

31008

- Urinary Organs**
1. Kidney, injected

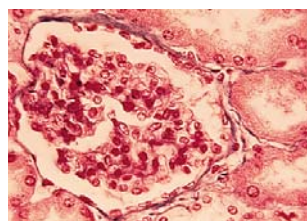
31009

- Ventral Hernias**
1. Schema

**General Histology,
8 Series, 52 Colour Slides with Text**

31050

- The Cell**
1. Schema
2. Cell of ovum
3. Cell of semen
4. Division of cell, prophase
5. Division of cell, metaphase
6. Division of cell, anaphase
7. Division of cell, telophase
8. Isolated cylindrical cell
9. Isolated fibroblast
10. Intercellular bridges
11. Phagocytosis I
12. Phagocytosis II



31051 (8)

13. Amoeboid movement

31051

- Epithelial Tissue**
1. Keratinizing tessellated epithelium
2. Non-keratinizing tessellated epithelium
3. Cubic epithelial
4. Cylindrical epithelial, single-layered
5. Cylindrical epithelial, single-layered with cilia
6. Multi-layered cylindrical epithelial
7. Transitional epithelium
8. Endothelium

31052

- Glandular Epithelium**
1. Caliciform cells
2. Sebaceous gland
3. Scent glands
4. Zymogen granules in pancreas

31053

- Connective Tissue**
1. Mesenchymo
2. Mucous tissue
3. Reticular tissue
4. Structure of reticular fibre (liver)
5. Fibrillary loose connective tissue
6. Firm connective tissue
7. Retiform connective tissue
8. Adipose tissue

31054

- Cartilage Tissue**
1. Hyaline cartilage
2. Elastic cartilage
3. Connective tissue cartilage

31055

- Bone Tissue**
1. Bone cells
2. Compact bones
3. Polarized section of bone
4. Cancellous bones
5. Osteoclasts
6. Osteoblasts
7. Bone growth

31056

- Muscular Tissue**
1. Plain muscular fibres
2. Transversally striated muscular fibres
3. The cardiac muscle

31057

- Nervous Tissue**
1. Ganglion cell
2. Nerve cell with apophysis
3. Glial and ganglion cells
4. Motor end-plates
5. Pacinian corpuscles
6. Meissner's corpuscles

**Special Histology
15 Series, 57 Colour Slides with Text**

31100

- The Vascular System**
1. Capillaries
2. Elastic arteries
3. Muscular arteries
4. Lymphatic vessel with valve, cross section

31101

- The Lymphatic Organs**
The Lymphatic Organs
1. Lymphatic nodules
2. Lymph nodes; schema
3. Lymph nodes: reticulum and lining cells
4. Spleen (schema)
5. Hassal's corpuscles

31102

- The Endocrine Organs**
1. Thyroid gland
2. Interleaved cell-islet
3. Pituitary gland: anterior lobe cells
4. Ovarium, follicle
5. Ovarium, luteum bodies

31103

- The Salivary Glands**
1. Serous acini
2. Mucous acini
3. Mixed acini
4. Excretory duct
5. Intercalated duct with secretion tube

31104

- The Oral Cavity**
1. Incisors, longitudinal section
2. Filiform papillae
3. Fungiform papillae
4. Vallate papillae
5. Taste bud

31105

- The Gastro-Intestinal Canal**
1. Cardia
2. Gastric fundus with adelomorphous and delomorphous cells
3. Pyloric glands
4. Intestinal villus
5. Kerckring's folds

31106

- The Liver**
1. Liver, schema
2. Liver lobules (pig's liver)



31106 (2)

31107

- Respiratory Organs**
1. Larynx, longitudinal
2. Lung, elastic fibres
3. Lung, covering epithelium

31108

- The Kidney**
1. Kidney (top view)
2. Cortex: glomerulus - main section - junctional section
3. Medulla: loops and collecting ducts

31109

- The Uterus**
1. Proliferation phase
2. Secretion phase
3. Placenta



31110 (2)

31110

- The Nervous System**
1. Spinal cord, cross-section
2. Spinal cord, cross-section finished in silver
3. Spinal cord, anterior horn finished in silver
4. Cerebellum, coated in silver
5. Cerebrum, coated in silver

31111

- The Eye**
1. Eye, complete
2. Anterior part of eyeball
3. Beginning of optic nerve
4. Retina

31112

- The Ear**
1. Cochlea
2. Duct of cochlea, cross-section
3. Spiral organ
4. Equilibrium organ

31113

- The Skin**
1. Skin with injected blood vessels
2. Scalp, longitudinal section, injected
3. Scalp, cross-section

31114

- The Breast**
1. Lactating mammary gland

**Haematology 12 Series,
59 Colour Slides with Text**

31150

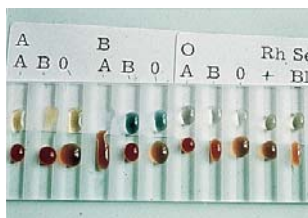
Blood Composition

1. General composition (macro)
2. Composition of the blood (schematic form)
3. Development of the blood cells
4. Eosinophil granulocyte
5. Basophil granulocyte
6. Neutrophil granulocytes
7. Lymphocytes
8. Blood monocytes
9. Lymphatic monocytes
10. Composition of the blood plasma (schematic form)

31151

Main Functions of the Blood

1. Circulation of matter (schematic form)
2. Protective function (schematic form)
3. Regulating the water balance (schematic form)



31152 (1)

31152

Blood Groups

1. Experimental blood group determination (macro)
2. Effect of blood groups (macro)
3. Agglutination and its absence (micro)

31153

Red Blood Corpuscles

1. Normal red blood corpuscles and thrombocytes
2. Reticulocytes (proerythrocytes)
3. Karyorrhexis patterns
4. Development and maturation, core classification (schema)
5. Hemolysis, reduction of hemoglobin (schema)

31154

Changes in the Volume of the Blood

1. Schema

31155

Aplastic Anaemia

1. Blood film
2. Bone marrow, fat marrow (micro)
3. Bone marrow fibrosis (section)
4. Carcinosis of the bone marrow (macro)
5. Carcinosis of the bone marrow (micro)
6. Necrotic tonsillitis (histological)

31156

Megaloblastic Anaemia

1. Blood smear
2. Bone marrow smear
3. Hunter's glossitis and skin colouring
4. Regeneration after Vitamin B 12 therapy (schema)

31157

Iron Deficiency Anaemia

1. Blood smear
2. Bone marrow smear
3. Anaemic skin colouring
4. Iron resorption

31158

Haemolytic Anaemia

1. Schematic diagram
2. Blood smear
3. Bone marrow smear
4. Colour of serum with hyperhaemolysis

31159

Foetal Erythroblastosis

1. Enlargement of the liver and spleen
2. Bilirubin infarct in the kidney (micro)
3. Kernicterus in the brain
4. Haematopoiesis foci in the liver (micro)

31160

Leukosis and Glandular Fever

1. Myelocytic leukosis (blood)
2. Lymphocytic leukosis (blood)
3. Monocytic leukosis (blood)
4. Infantile leukosis (blood)
5. Paramyeloblastosis with Auer's bodies (blood)
6. Infectious mononucleosis (blood smear)
7. Infectious mononucleosis (clinical photograph)
8. Senile spread (schema)

31161

Bleeding and Clotting

1. Thrombopoiesis (schematic form)
2. Blood clotting (schematic form)
3. Haemorrhagic purpura
4. Haemophilia, knee joint
5. Haemophilia, injection puncture
6. Osler's disease (macro)
7. Cholemic bleeding

Physiology

8 Series, 42 Colour Slides with Text

31200

Circulation

1. Heart: systole-diastole
2. Heart: valvular action
3. Valvular defect: stenosis
4. Valvular defect: insufficiency
5. Schematic diagram of the circulatory system
6. Venous thrombosis of the leg - pulmonary embolism
7. Thrombosis of the heart - organic embolism
8. Venous thrombosis of the leg - paradoxical embolism
9. Functioning of the heart
10. Portal circulation
11. Lymph path

31201

Respiratory Organs

1. Swallowing - breathing
2. Gaseous interchange

31202

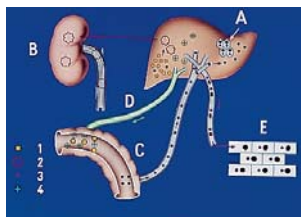
Digestion

1. Main nutrients
2. Oral cavity - stomach
3. Intestine
4. Digestive juices in the intestine
5. Combination of digestive juices
6. Resorption in the intestine
7. Path of the resorbed food components
8. Intermediary metabolism (schematic form)
9. The end products

31203

The Liver

1. Bile formation
2. Forms of jaundice



31203 (5)

3. The liver as a storage organ in sugar metabolism
4. Disturbance in sugar metabolism, Diabetes mellitus
5. The liver in protein and fat metabolism
6. Build-up of urea in the liver
7. Detoxination function of the liver

31204

Vitamins

1. Vitamin AB in schematic form
2. Vitamin CD in schematic form

31205

Internal Secretions

1. Regulation in schematic form

31206

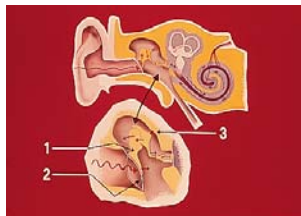
The Kidney

1. Function of the kidneys, schematic form
2. Glycosuria
3. Nephrosis
4. Nephrosclerosis
5. Glomerulonephritis

31207

The Nervous System

1. The reflex arc
2. Irritation and response
3. The autonomous nervous system
4. Vision
5. Hearing



31207 (5)

**Reproduction and Development 6 Series,
42 Colour Slides with Text**

31250

Ovary and Maturation

1. Schematic diagram of development of the ovum
2. Ovary, cross-section
3. Primordial follicle
4. Secondary follicle
5. Vesicular ovaries follicle
6. Dizygotic follicle
7. Corpus luteum (micro)
8. Corpus luteum (macro)
9. Equational division
10. Reduction division
11. Uterus cycle (schematic form)

31251

Testicles and Formation of Spermatozoids

1. Testicle, cross-section
2. Maturation of the spermatozoid
3. Development of the spermatozoid
4. Spermatozoids

31252

Fertilization

1. Act of fertilization (schema form)
2. Penetration of the spermatozoid into the ovum
3. Maturation division

31253

Segmentation and Gastrulation

1. Dizygotic phase
2. 4-cell phase
3. 64-cell phase
4. Morula
5. Blastula
6. Gastrulation, schematic form
7. Gastrula
8. Implantation in the uterus



31254 (4)

31254

Foetal Envelopes and Cell Layers

1. Foetal envelopes, schematic form
2. The development phases, schematic form
3. Neural groove, cross-section
4. Neural tube, cross-section
5. Conversion of the mesoderm, schematic form

31255

Development of External Body Shape and Organs

1. Formation of external shape, schematic diagram
2. 14-day-old foetus (macro)
3. Dizygotic twins (macro)
4. 3-month-old foetus (macro)
5. Development of the bones
6. Embryonic heart
7. Embryonic small intestine
8. Embryonic lung
9. Development of the brain
10. Development of the eye
11. Embryonic kidney

31300
Irregularities in Development (Malformations)

- 5 colour slides with text
 1. Leg aplasia (sirenomelus)
 2. Syndactylia (finger)
 3. Hare lip
 4. Cleft palate
 5. Meningomyelocystocele

31301
Circulatory Disturbances

- 12 colour slides with text
 1. Thrombosis in longitudinal section (macro)
 2. Thrombosis in cross-section (macro)
 3. Thrombosis, cross view (micro)
 4. Massive pulmonary embolism (macro)
 5. Hemorrhagic pulmonary infarct (macro)
 6. Hemorrhagic pulmonary infarct (micro)
 7. Anaemic spleen infarct (macro)
 8. Anaemic spleen infarct (micro)
 9. Tumour embolism, lung
 10. Fat embolism, lung (micro)
 11. Fat embolism, cerebral (micro)
 12. Fat embolism, renal (micro)

31302
Inflammation and Restoration of the Tissue

- 8 colour slides with text
 1. Fibrinous pneumonia (micro)
 2. Scab esophagitis (micro)
 3. Cheesy pneumonia (micro)
 4. Chronic pneumonia (micro)
 5. Scar (macro)
 6. Scar (micro)
 7. Callus (macro)
 8. Callus (micro)

31303
Tumours

- 9 colour slides with text
 1. Fibroma (macro)
 2. Fibroma (micro)
 3. Myoma (macro)
 4. Spindle cell sarcoma (micro)
 5. Glioma (micro)
 6. Ovarii adenoma (micro)
 7. Adenocarcinoma (macro)
 8. Carcinoma metastasis
 9. Vascular carcinoma penetration

31305
Malformations

- 2 colour slides with text
 1. Heart dividing wall defect
 2. Open foramen, oval



31305 (2)

31306
Endocard

- 4 colour slides with text
 1. Verrucous endocarditis (macro)
 2. Ulcerative polypous endocarditis
 3. Mitral stenosis, auricular dilatation, ball thrombus
 4. Completed endocarditis of the aorta valve with torn off valve pocket

31307
Myocardium

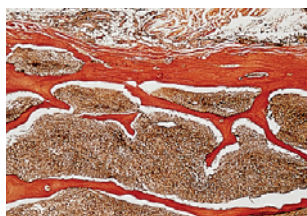
- 5 colour slides with text
 1. Cardiac hypertrophy and dilatation
 2. Atherosclerosis, old anterior wall infarct
 3. Fresh cardiac infarct (micro), overview
 4. Fresh cardiac infarct (micro), centre
 5. Fresh cardiac infarct (micro), periphery zone

31308
Pericardium

- 3 colour slides with text
 1. Tuberculous pericarditis (macro)
 2. Tuberculous pericarditis (micro)
 3. Pericardial carcinosis

31309
Arteries

- 4 colour slides with text
 1. Aneurysma (macro)
 2. Artherosclerosis (macro)
 3. Artheromatosis (micro)
 4. Artherosclerosis (micro)



31310 (2)

31310
Blood

- 7 colour slides with text
 1. Lymphatic leukemia - bone marrow smear
 2. Lymphatic leukemia - bone marrow
 3. Lymphatic leukemia - lymph node (macro)
 4. Lymphatic leukemia - lymph node (micro)
 5. Lymphatic leukemia - spleen (macro)
 6. Lymphatic leukemia - spleen (micro)
 7. Myeloid leukemia - enlargement of liver and spleen

31311
Bone Marrow

- 4 colour slides with text
 1. Aplasia
 2. Red bone marrow (macro)
 3. Red bone marrow (micro)
 4. Fat marrow

31312
Spleen

- 5 colour slides with text
 1. Spleen rupture
 2. Lymphogranulomatosis (macro)
 3. Lymphogranulomatosis (micro)
 4. Amyloidosis (macro)
 5. Amyloidosis (micro)

31313
Lymph Nodes

- 4 colour slides with text
 1. Lymph node tuberculosis
 2. Lymphoma
 3. Lymphosarcoma
 4. Carcinoma metastasis

31315
Thyroid Gland

- 4 colour slides with text
 1. Struma colloides (macro)
 2. Struma colloides (micro)
 3. Struma parenchymatosa - M. Basedow (macro)
 4. Struma parenchymatosa - M. Basedow (micro)

31316
Parathyroid Gland

- 1 colour slide with text
 1. Adenoma of the parathyroid gland

31317
Adrenal Gland

- 2 colour slides with text
 1. Morbus addisonii - skin pigmentation
 2. Morbus addisonii - adrenal tuberculosis

31318
Stomach

- 3 colour slides with text
 1. Gastric ulcer
 2. Round gastric ulcer with perforation
 3. Stomachal carcinoma

31319
Intestines

- 5 colour slides with text
 1. Meckel's diverticulum
 2. Polyposis intestinalis
 3. Duodenal ulcer
 4. Tuberculosis of the small intestine
 5. Typhus ulcer

31320
Liver

- 8 colour slides with text
 1. Fatty liver (macro)
 2. Fatty liver (micro)
 3. Atrophic liver cirrhosis (macro)
 4. Atrophic liver cirrhosis (micro)
 5. Primary liver carcinoma (macro)
 6. Primary liver carcinoma (micro)
 7. Liver metastasis with rectum melanoma
 8. Stone gallbladder



31321 (1)

31321
Larynx and Trachea

- 5 colour slides with text
 1. Glottis edema
 2. Larynx tuberculosis
 3. Larynx carcinoma
 4. Foreign body in larynx
 5. Foreign body in bronchus



31322 (14)

31322
Lungs

- 15 colour slides with text
 1. Bronchiectasis
 2. Pulmonary emphysema (macro)
 3. Pulmonary emphysema (micro)
 4. Pneumoconiosis (macro)
 5. Pneumoconiosis (micro)
 6. Silicosiderosis
 7. Lobe pneumonia
 8. Cheesy pneumonia, cavern
 9. Pulmonary carcinoma (macro)
 10. Pulmonary carcinoma (micro)
 11. Tuberculous primary complex
 12. Exudative tuberculosis
 13. Massive distribution of tuber culosis of the lung
 14. Cavernous tuberculosis of the lung
 15. Miliary tuberculosis of the lung

31323
Urinary organs

- 14 colour slides with text
 1. Horseshoe kidney
 2. Hypoplasia of one kidney
 3. Cystic kidney
 4. Acute glomerulonephritis, facial edema
 5. Acute glomerulonephritis (macro)
 6. Subacute glomerulonephritis (micro)
 7. Subchronic glomerulonephritis (micro)
 8. Chronic glomerulonephritis (micro)
 9. Granularatrophy
 10. Amyloidnephrosis
 11. Nephrosis edema
 12. Nephrosis - healing
 13. Hydronephrosis
 14. Kidney stones

31324

Fallopian Tube

- 2 colour slides with text
 1. Tubal pregnancy
 2. Burst tubal pregnancy

31325
Uterus

- 3 colour slides with text
 1. Pregnancy with uterus myomatosis
 2. Uterus carcinoma (macro)
 3. Uteruscarcinom (micro)

31326
Mammary Gland

- 1 colour slide with text
 1. Mamma carcinoma (macro)

31327

Locomotor System

- 5 colour slides with text
- 1. Abscessing osteomyelitis in tibia head
- 2. Chronic osteomyelitis
- 3. Ostitis fibrosa cystica generalisata
- 4. Bone fracture
- 5. Carcinoma metastasis

31328

Skin

- 4 colour slides with text
- 1. Urticaria
- 2. Ichthyosis
- 3. Lupus vulgaris
- 4. Patchy hairy nevus

31329

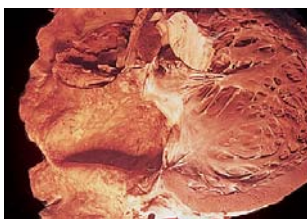
Nervous System

- 14 colour slides with text
- 1. Hydrocephalus
- 2. Hydrocephalus, internal
- 3. Pneumococcal meningitis
- 4. Tuberculous meningitis (macro)
- 5. Tuberculous meningitis (micro)
- 6. Cerebral abscess
- 7. Cerebral abscess with distinct diaphragm formation
- 8. Ruptured cerebral base aneurysm
- 9. Extensive haemorrhage in the inner capsule
- 10. Poliomyelitis (micro)
- 11. Poliomyelitis - respiration paralysis and atrophy
- 12. Poliomyelitis - paralysis of the extremities
- 13. Poliomyelitis - paralysis of the lower extremities
- 14. Extensive glioma with haemorrhage

31330

Infectious Diseases

- 12 colour slides with text
- 1. Tuberculous lymph node swelling
- 2. Lymph node tuberculosis (micro)
- 3. Langhans' giant cells
- 4. Miliary tuberculosis
- 5. Primary effect on the vulva
- 6. Mesaortitis luica



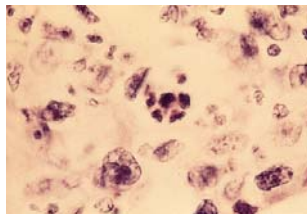
31330 (6)

- 7. Connatal syphilis of the liver (micro) - spirochaeta
- 8. Tetanus
- 9. Herpes zoster
- 10. Scarlet fever - tongue
- 11. Measles - exanthema
- 12. German measles - exanthema

31333

Benign Tumours

- 14 colour slides with text
- 1. The most common myomas of the uterus (schematic diagram)
- 2. Uterus myoma (macro)
- 3. Papillary ovarian cystoma (macro)
- 4. Teratoma on the area of the coccyx (operation photograph)
- 5. Benign cystic tumour of the kidney in new born baby, closed (operation photograph)
- 6. Benign cystic tumour of the kidney in new born baby, opened up (operation photograph)
- 7. Fibro-adenoma of the mammary gland (micro)
- 8. Parathyroid gland tumour
- 9. Chondroma of the rib (micro)
- 10. Hemangioma of the conjunctiva (clinical photograph)
- 11. Cavertous angioma (micro)
- 12. Patchy nevus on the head (clinical photograph)
- 13. Nevus on the cheek (clinical photograph)
- 14. Pigmented papilloma (micro)



31334 (2)

31334

Malignant Tumours: Breast and Womb

- 7 colour slides with text
- 1. Cancer of the breast (schematic diagram)
- 2. Cancer cell, carcinoma simplex (micro)
- 3. Cancer cell, basal cell cancer (micro)
- 4. Cancer of the womb, carcinoma cervicis uteri (micro)
- 5. Mammary gland carcinoma, carcinoma simplex (micro)
- 6. Mammary gland carcinoma with lymph node metastasis (macro)



31335 (1)

- 7. Mammary gland carcinoma (operation photograph)

31335

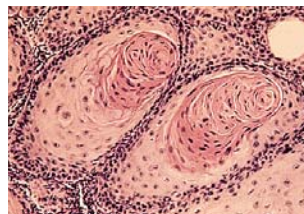
Malignant Tumours: Respiratory and Digestive Organs

- 7 colour slides with text
- 1. Cancer of the larynx (macro)
- 2. Lung cancer (macro)
- 3. Cancer of the tongue (macro)
- 4. Cancer of the trachea (macro)
- 5. Tumour invested stomach cancer (macro)
- 6. Diffuse growing cancer of the stomach (macro)
- 7. Anal cancer (clinical photograph)

31336

Malignant Tumours: Liver, Pancreas, Kidneys

- 8 colour slides with text
- 1. Cancer metastasis in the liver (micro)
- 2. Cancer metastasis in the liver (macro)



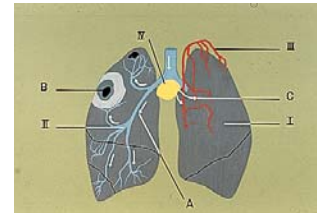
31337 (6)

- 3. Primary cancer of the liver (macro)
- 4. Primary cancer of the liver (micro)
- 5. Cancer of the pancreas head (macro)
- 6. Cauliflower cancer of the kidney (macro)
- 7. Cancer of the kidney (micro)
- 8. Hypernephroidic cancer of the kidney (macro)

31337

Malignant Tumours: Skin and Spleen

- 13 colour slides with text
- 1. Cancer of the skin - on the ear (clinical photograph)
- 2. Cancer of the skin - on the nose (hospital photograph)
- 3. Cancer of the skin - on the hand (clinical photograph)
- 4. Cancer of the skin - on lower leg (clinical photograph)
- 5. Callous plate epithelium cancer (micro - 36:1)
- 6. Callous plate epithelium cancer (micro - 120:1)
- 7. Melanoma on the lower eyelid (clinical photograph)
- 8. Melanoma metastasis in the liver (macro)
- 9. Melanoma metastasis in the skin (micro)
- 10. Lymphoblastic sarcoma in the spleen (macro)
- 11. Lymphoblastic sarcoma in the spleen (micro)
- 12. Round cell sarcoma in the spleen (macro)
- 13. Round cell sarcoma in the spleen (micro)



31339 (2)

31338

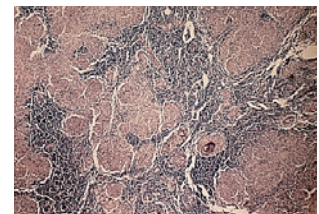
Malignant Tumours: Brain

- 4 colour slides with text
- 1. Glioma in the temple lobe (macro)
- 2. Glioma in the temple lobe (micro)
- 3. Glioma with extensive haemorrhage (macro)
- 4. Angiosarcoma in the small angle of the bridge (macro)

31339

Tuberculosis

- 27 colour slides with text
- 1. Tubercle bacillus (mycobacterium tuberculosis)
- 2. Tuberculosis of the lung (schematic diagram)
- 3. Primary complex (macro)
- 4. Encapsulated tuberculosis focus (macro)
- 5. Exudative pulmonary tuberculosis (macro)
- 6. Cheesy pneumonia (micro)
- 7. Bronchiogenous spread in the lung (schematic diagram)
- 8. Lymph node swelling on the neck (clinical photograph)
- 9. Lymph node swelling in the armpit (clinical photograph)
- 10. Lymph node tuberculosis (macro)
- 11. Lymph node tuberculosis (micro)
- 12. Large knot spleen tuberculosis (macro)
- 13. Kidney tuberculosis (macro)
- 14. Caseating double-sided kidney tuberculosis
- 15. Small intestine tuberculosis



31339 (22)

- 16. Organ tuberculosis - spreading through the blood path (schematic diagram)
- 17. Miliary tuberculosis (micro - 40:1)
- 18. Tuberculous neck gland (micro)
- 19. Miliary tuberculosis (micro - 12:1)
- 20. Miliary tuberculosis (macro)
- 21. Tuberculous meningitis (clinical photograph)
- 22. Tuberculous meningitis (micro)

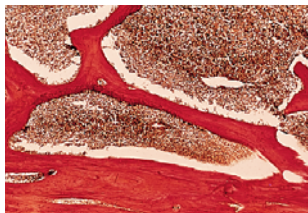


31340 (19)

23. Submiliary tuberculosis of the liver (micro)
24. Miliary tuberculosis in the intestine (micro)
25. Skin tuberculosis (clinical photograph)
26. Lupus vulgaris in the face (clinical photograph)
27. Clubbed fingers (clinical photograph)

31340 Leukemia

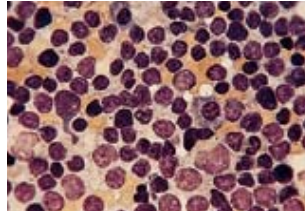
- 29 colour slides with text
 1. Enlargement of liver and spleen (clinical photograph)
 2. Enlargement of spleen (clinical photograph)
 3. Enlargement of lymph node (macro)
 4. Enlargement of spleen, surface (macro)
 5. Enlargement of spleen, cutting area (macro)
 6. Lymphatic leukemic infiltration in the spleen (micro - 38:1)
 7. Lymphatic leukemic infiltration in the spleen (micro - 130:1)
 8. Liver with focal leukemic infiltration (macro)
 9. Bone marrow smear (micro - 40:1)
 10. Bone marrow smear (micro - 240:1)
 11. Liver, lymphatic leukemic infiltration (micro - 60:1)
 12. Liver, lymphatic leukemic infiltration (micro - 160:1)
 13. Lymphatic leukemic infiltration in the abdominal skin (micro - 12:1)
 14. Lymphatic leukemic infiltration in the abdominal skin (micro - 130:1)
 15. Lymphoid ring with lymphatic leukemia (macro)
 16. Lymphatic leukemic infiltration in the tonsils (micro - 38:1)
 17. Lymphatic leukemic infiltration in the tonsils (micro - 130:1)
 18. Lymphatic leukemic infiltration in the gums near the surface



31340 (27)

19. Leukemic infiltration in the kidney (macro)
20. Lymphatic leukemic infiltration in the kidney (micro - 15:1)
21. Lymphatic leukemic infiltration in the kidney (micro - 38:1)

22. Lymphatic leukemic infiltration in the kidney (micro - 160:1)
23. Lymphatic leukemic infiltration in the musculature (micro - 130:1)
24. Lymphatic leukemic infiltration in the myocardium (micro - 130:1)
25. Lymphatic leukemic infiltration in the lung (micro - 38:1)
26. Enlargement of the lymph glands (clinical photograph)
27. Bone marrow with lymphatic leukemia (micro - 30:1)
28. Bone marrow with lymphatic leukemia (micro - 160:1)
29. Skin bleeding (clinical photograph)



31340 (10)

Dermatology

34001 Vessles and Haemorrhage of the Skin

- 9 colour slides with text
 1. Varices
 2. Teleangiectasis
 3. Neves teleangiectaticus
 4. Neves anaemicus
 5. Seniles angioma
 6. Planes hemangioma
 7. Irradiated hemangioma
 8. Tuberosus hemangioma
 9. Purpura senilis

34002 Eczema, Erythema, Exanthema

- 9 colour slides with text
 1. Acute contact eczema
 2. Cheilitis allergica
 3. Chronic contact eczema
 4. Bacterial eczema
 5. Seborrhoeicum eczema
 6. Nummular seborrhoeicum eczema
 7. Psoriasis
 8. Psoriatic arthropathy
 9. Crusta lactea

34003 Skin Diseases caused by Germs

- 8 colour slides with text
 1. Superficial trichophytosis
 2. Deep trichophytosis
 3. Pyoderma
 4. Carbuncle
 5. Bullous pyoderma
 6. Herpes simplex
 7. Zoster scars
 8. Insect bites

34004 Cornification and Embedment

- 4 colour slides with text
 1. Palmar hyperkeratosis
 2. Ichthyosis nitida
 3. Keratoma senile
 4. Verrucous pigmented nevus

34005 Skin Growths

- 11 colour slides with text
 1. Seborrhic warts
 2. Vulgar wart
 3. Fibromatoid nevus
 4. Nevus papillomatosus
 5. Koenen tumour
 6. Knuckle pads
 7. Keloid
 8. Basalioma
 9. Cancroid
 10. Morbus paget
 11. Malignant lymphoma

34006 Atrophies and Sclerosis

- 6 colour slides with text
 1. Scar sclerosis
 2. White atrophy
 3. Dermatosclerosis
 4. Dupuytren's contracture
 5. Radiation callosities
 6. Cutis rhomboidalis

34007 Skin Appendages

- 10 colour slides with text
 1. Nail mycosis
 2. Nail dystrophy
 3. Ungues hippocratici
 4. Trichomycosis
 5. Acne, comedo
 6. Miliary
 7. Sebaceous gland nevus
 8. Sweat gland abscess
 9. Sweat purpura
 10. Mamilla accessorius

34008 Mucosa Changes

- 6 colour slides with text
 1. Leukoplakia
 2. Stomatitis aphthosa
 3. Trichoglossia
 4. Mucosa cyst
 5. Mucosa hemangioma
 6. Gingivitis

34009 Syndromes, Reactions, etc

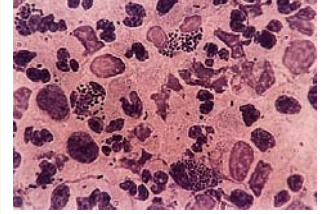
- 3 colour slides with text
 1. Mycosis fungoides
 2. Second degree burn
 3. Adenoma sebaceum

Living External Causes of Disease (Parasites) 3 series, 33 colour slides with text

- 31450 Pathogenic Micro-Organisms**
1. Mycobacterium tuberculosis
 2. Pneumococci
 3. Meningococci
 4. Streptococcus pyogenes
 5. Streptococcus viridans
 6. Staphylococcus aureus
 7. Bacterium coli
 8. Enterococci
 9. Bacterium dysenteriae
 10. Bacterium tetani
 11. Bacterium influenzae
 12. Fusospirochetal angina
 13. Micrococcus gonorrhoeae
 14. Anthrax bacteria
 15. Actinomycosis
 16. Trypanosoma gambiense
 17. Malaria tertiana
 18. Spirochaeta pallida
 19. Vibrio cholerae
 20. Corynebacterium diphtheriae

31451 Worms

1. Ova of taenia lumbricoides and trichocephalus trichuriasis



31450 (3)

2. Ova of taenia saginata
3. Taenia saginata proglottis
4. Ascariasis of the liver (macro)
5. Pin-worm
6. Hook-worm
7. Trichinella spiralis
8. Strompylus vulg.
9. Calcified echinococci cysts in the cardiac muscle



31452 (2)

31452 Insects

1. Mosquito
2. Flea
3. Bedbug
4. Louse



CLA offers the complete range of SOMSO anatomical models. The Zoology and Botany Catalogue is also available on demand.

Please note

Copying models, phantoms and nursing dolls is prohibited and infringement is subject to compensation for damages.

By closely co-operating with scientific institutes CLA endeavors to provide state-of-the-art models that conform to the latest scientific developments. The CLA nursing dolls, medical phantoms and majority of models are produced in durable plastic and are appropriately identified. In so far as a models dimensions and weights are altered, such modifications are due to the latest technical and scientific developments.

All rights are reserved and protected by copyright, specifically for reprinting, duplication and translation. In addition any photo mechanical and digital reproduction even in extract form will be subject to express written approval.

© Copyright 1999 by Coburger Lehrmittelanstalt

Media bearing the symbol of the Federal German Central Office for Health Education is published by this agency or has been produced in co-operation with CLA.



ANATOMY



ANATOMY 7/8
Nose and Tongue, Larynx



ANATOMY 14
Extremities and Joints



ANATOMY 1
Muscular Figures, Torso Models



ANATOMY 9
Circulatory Organs



ANATOMY 15
Pathological Collections



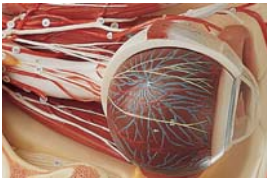
ANATOMY 2/3
Head, Nervous Systems



ANATOMY 10
Digestive Organs



ANATOMY 16
Artificial Bone Models



ANATOMY 4
Eye



ANATOMY 11
Anatomy of Skin and Hair



ANATOMY 17
Documentation of Racial Origins



ANATOMY 5
Ear



ANATOMY 12
Urinary Organs



ANATOMY 6
Teeth and Jaw



ANATOMY 13
Genital Organs, Embryonic Development, Birth, Baby Care





CLA[®] **COBURGER**
LEHRMITTELANSTALT
Medien für die
Gesundheitserziehung



Systèmes Didactiques s.a.r.l.
Équipement pour l'enseignement expérimental, scientifique et technique
www.systemes-didactiques.fr

Systèmes Didactiques
Savoie Hexapole - Actipole 3 - rue Maurice Herzog
F 73420 Viviers du Lac
Tél : 04 56 42 80 70 Fax : 04 56 42 80 71
xavier.granjon@systemes-didactiques.fr

Génie Mécanique, Génie Thermique, Génie des Procédés, Mécaniques des fluides,
Physique, Chimie, Modèles anatomiques et végétaux, Microscopes, SVT,
Génie électrique, Automatismes, Régulation, Télécommunications,
Énergies renouvelables, Solaire, Piles à Hydrogène, Mobilier