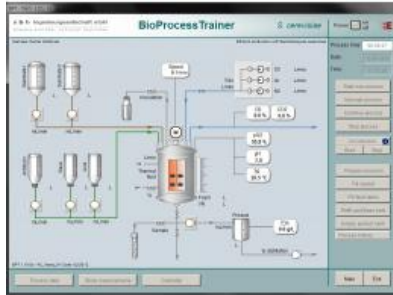


Date d'édition : 06.05.2026



Ref : EWTSCS-BPT-10

Logiciel de simulation de commande d'un bio-réacteurs  
(10x licences)

With the educational software BioProcessTrainer experiments you may run experiments with *S. Cerevisiae* in a simulated bioreactor. The process can be aerobic or anaerobic in batch, fed-batch or continuous mode of operation.

Operation of Reactor:

- Inoculate and sample  $\mu$
- PH- and antifoam control
- Temperature and level control
- pO<sub>2</sub>-control
- Simulation in real time and up to 15x accelerated